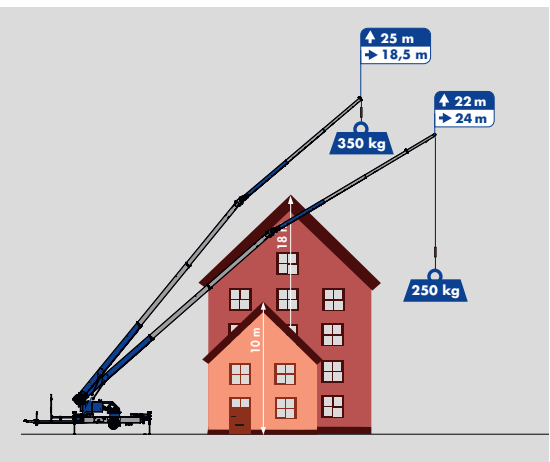


K400



Hook height **34.3 m**/Boom length **35.8 m**

Max. capacity **3,000 kg**

24 m Working range with **250 kg**



K400

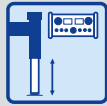
Equipment



TSR Boom system



V²-Outriggers



Automatic levelling



Hydraulic, telescopic fly jib



Twin luffing cylinders



Double derricking cylinders



Continuous rotation



Crane control system



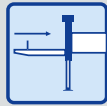
Radio remote control



Drive concept



Full panelling



Retractable drawbar



Self-drive mechanism



Personal Safety Mode



Hybrid drive (opt.)



Working platform (opt.)



Accessory fix system (opt.)



Mounting-/glass hook (opt.)

Technical specifications

Hook load (stand./optional)	1,600/3,000 kg
Hook height	34.30 m
Boom length	35.81 m
Max. working height HA	30.60 m
Outrigger width (min.)	3.90 m
Outrigger width (max.)	5.49 m
Winch capacity	1,600 kg
Boom (1,600 kg - 350 kg)	5.01 - 11.81 m
Extension 3 (250 kg)	13.97 m
Vehicle dimensions	9.43 x 2.35 x 2.61 m
Towing capacity	3.5 t

Working range

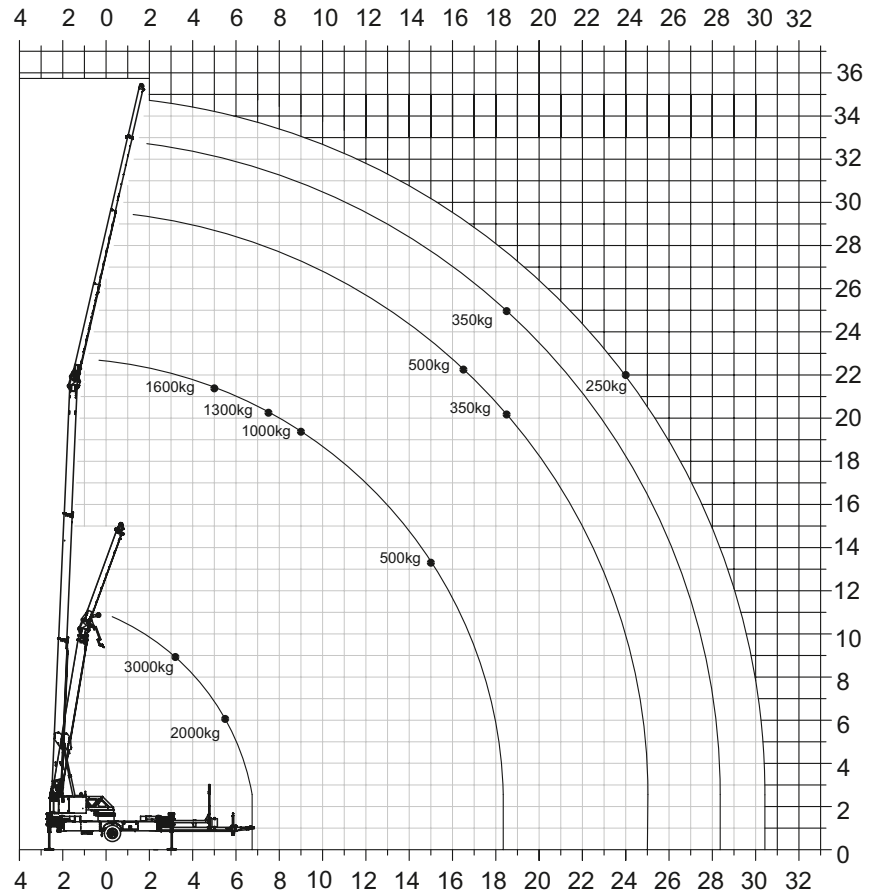
Load	Working range	Height
1,600 kg	5.00 m	21.00 m
1,000 kg	9.00 m	19.00 m
500 kg	16.50 m	22.00 m
350 kg	18.50 m	25.00 m
250 kg	24.00 m	22.00 m

Working range 3t Capacity*

Load	Working range	Height
3,000 kg	3.00 m	9.00 m
2,000 kg	5.50 m	6.00 m

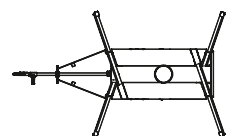
*with 2-fall

Working range diagram



V²-Outriggers

- optimum stability due to V²-support
- excellent use of the available space
- variable installation possibilities depending on local conditions



Hydraulic, telescopic fly jib

- hydraulic telescoping of the first and second folding top elements



Hybrid drive (opt.)

- optional drive by diesel engine or by environmentally friendly electric motor (32 ampere power current) possible
- electric motor can be removed for road transport without tools